

Data Back Up Guide for Ahead Nero

1. Click **Start** button, then **Programs, Ahead Nero, Nero Express** as shown in **Figure 1** below..

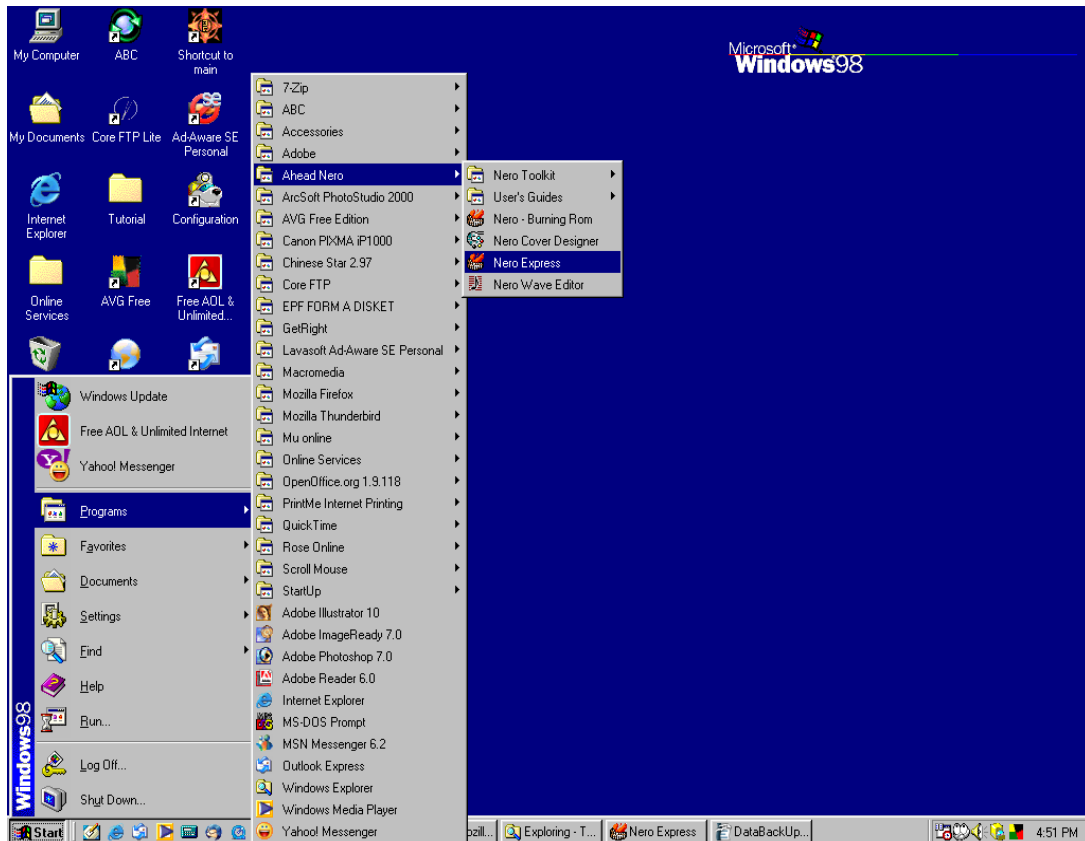


Figure 1: Location of Ahead Nero Express icon.

2. A similar window will appear as shown in **Figure 2** below. **For CD RW media, click on "More >>" button & click on "Erase Disc"** and as for CDR media, skip to step 5.

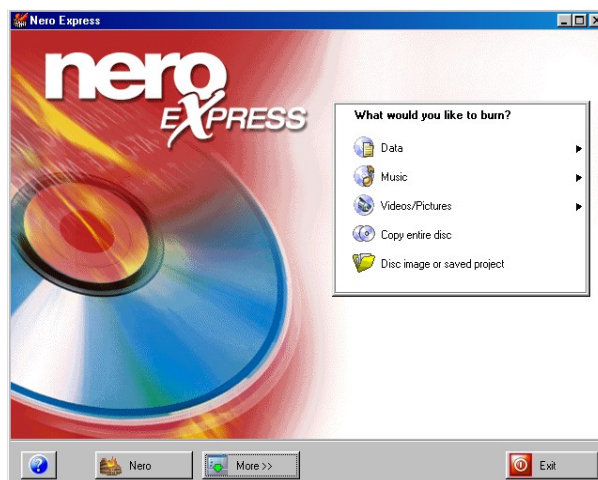


Figure 2: Nero Express Main window.

3. Erase CD RW window will appears and ensures **Quick-erase rewritable media** for *erase method* and **Maximum** for *erase speed* are chosen as shown in Figure 3 below. Click on **Erase** button.

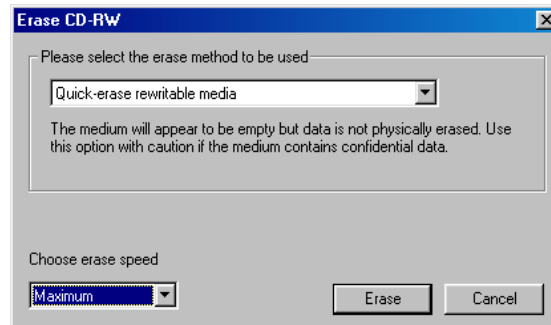


Figure 3: Erase method and speed for CD RW media.

4. Erase CD RW will takes **few minutes** (depending on CD Writer device's speed). Once it has done, click on **OK** button and it will return to **Figure 2** shown above.
5. Goto **Data** and select **Data Disc** as shown in **Figure 4** below.

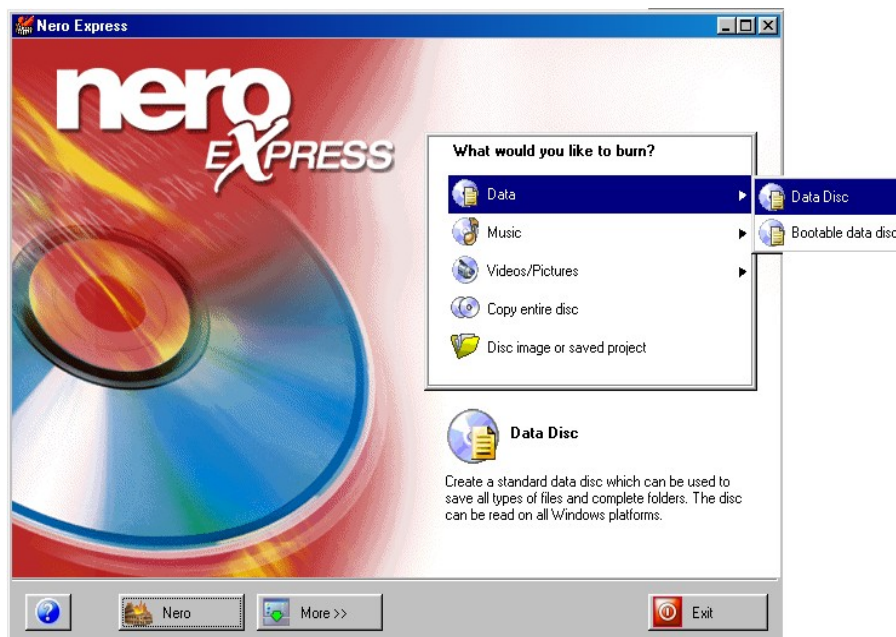


Figure 4: Burning selection window.

- Click **Add** to add folder/s or file/s for burning as shown in **Figure 5** below.

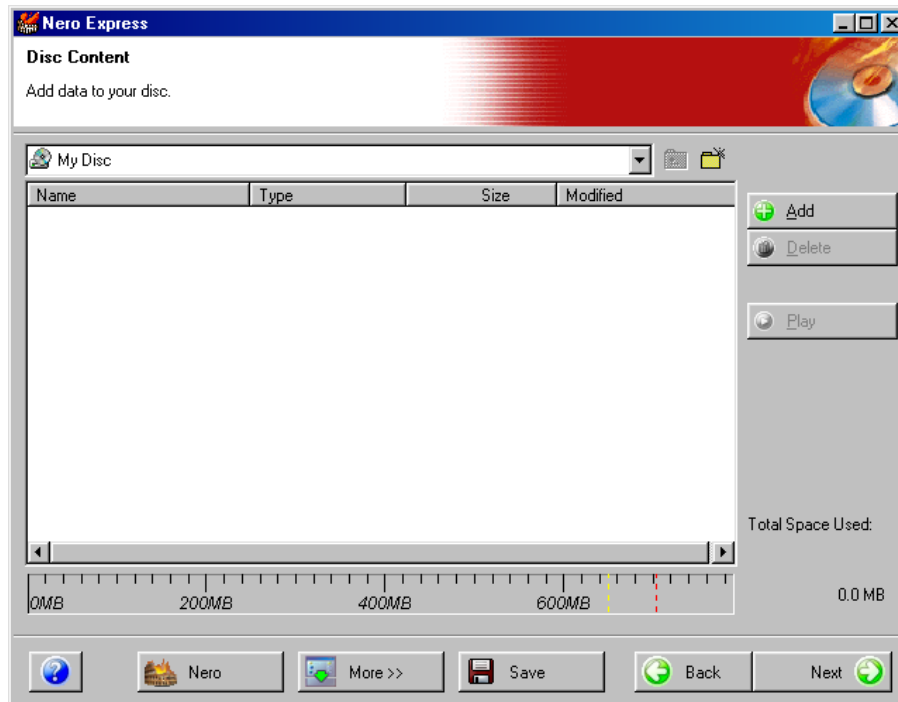


Figure 5: A browsable window which allows us to choose file/s or folder/s.

- You may select one by one or few or what ever way you prefer.

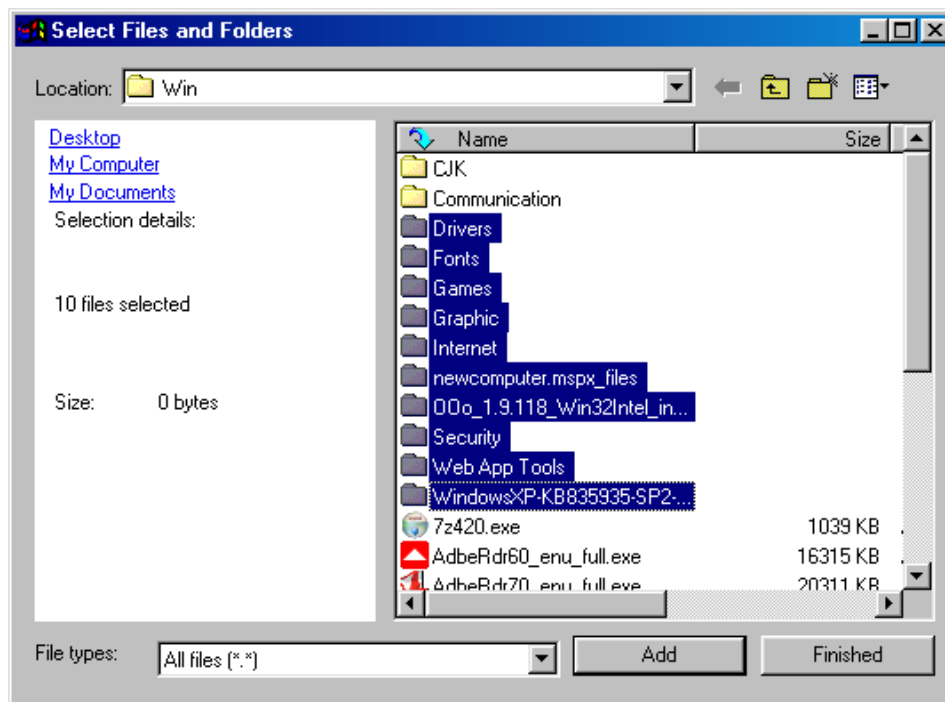


Figure 6: Select Files and Folders window.

8. Click **Add** button and click on **Finished** button when you are done. Observe the Total Space Used as shown below. If your CDRW media is 650MB only, then your data is too late to be copied. Try reducing it to 600MB or lesser. Click **Next** button to continue.

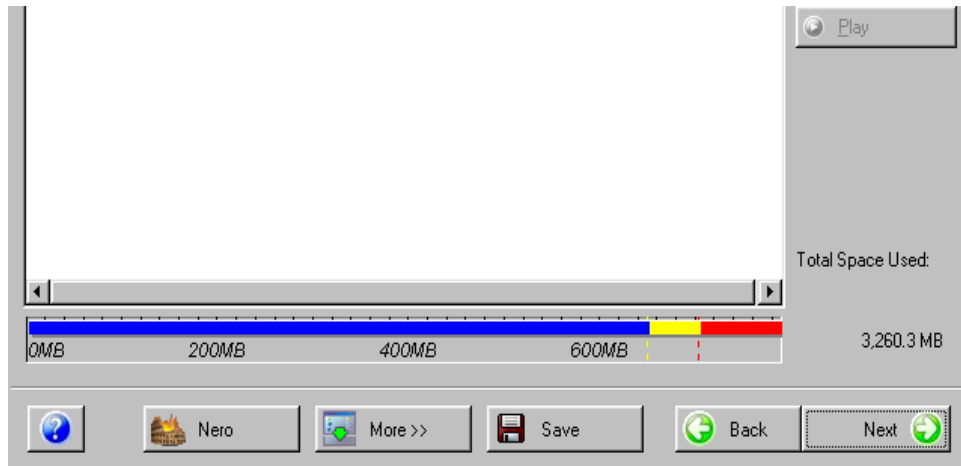


Figure 7: Total Space Used indicator.

9. Click **Burn** button when you see the figure shown below.

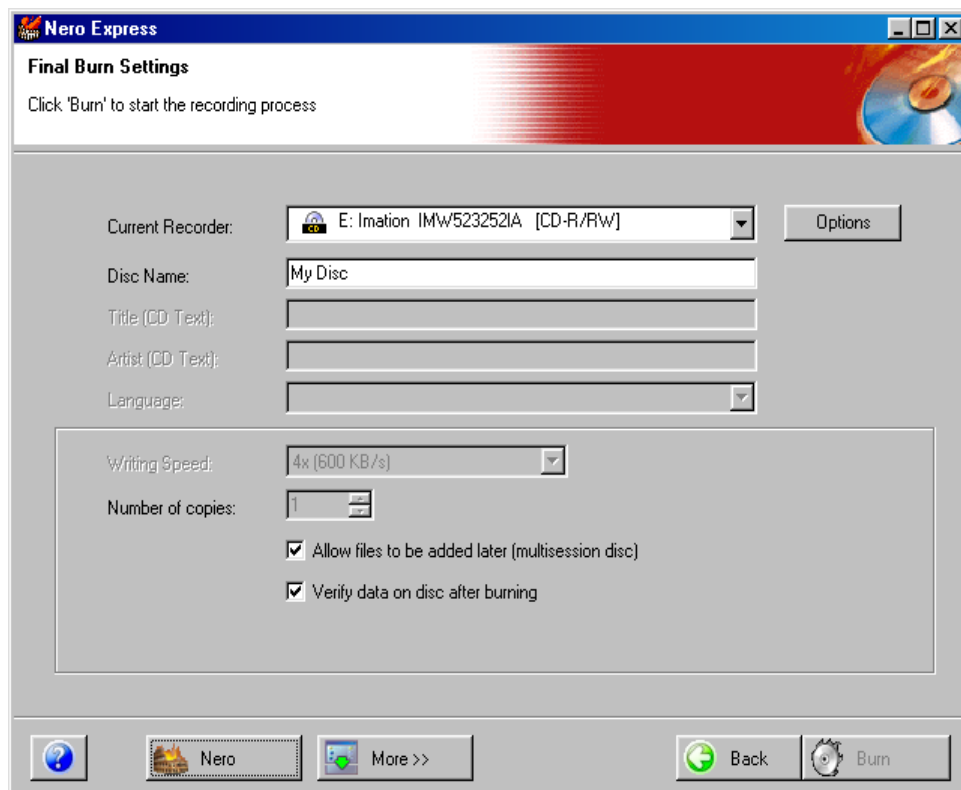


Figure 8: Final Burn Settings window.

10. A burning process window will appear as shown in **Figure 9** below.

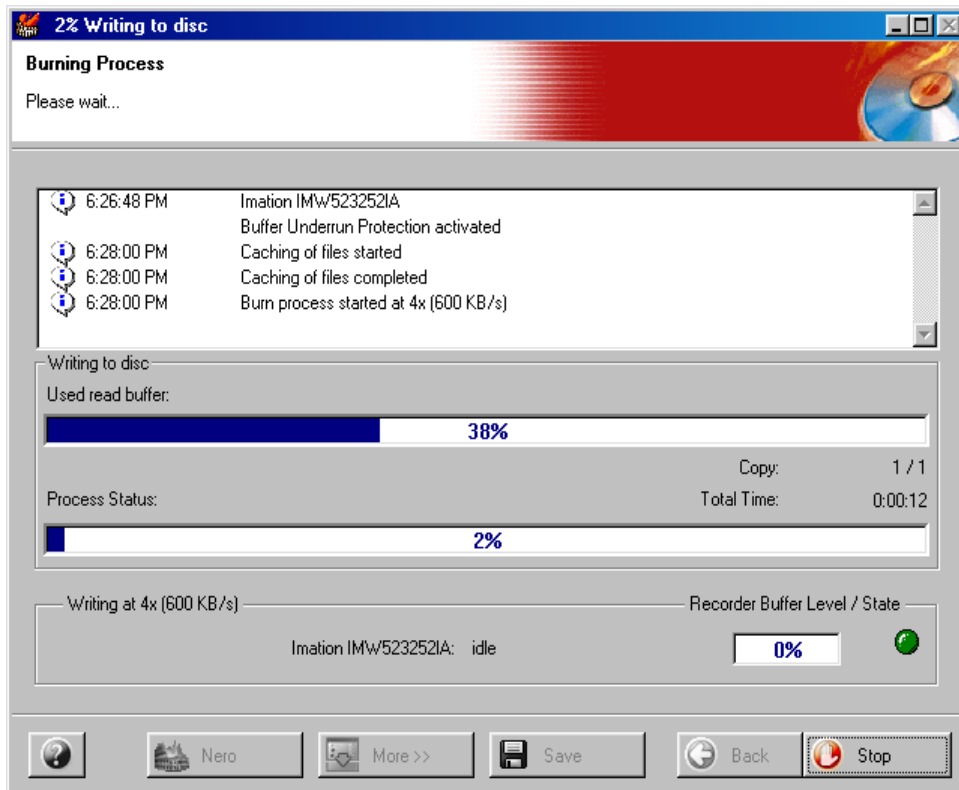


Figure 9: Burning process window.

11. The burning process will end with a window shown below.



Figure 10: Ending Window.